



COUNTY HIGHWAY S EAST FRONTAGE ROAD TO WIS 31

Project Update

December 2, 2020



COUNTY HIGHWAY S WINTER CONFIGURATION

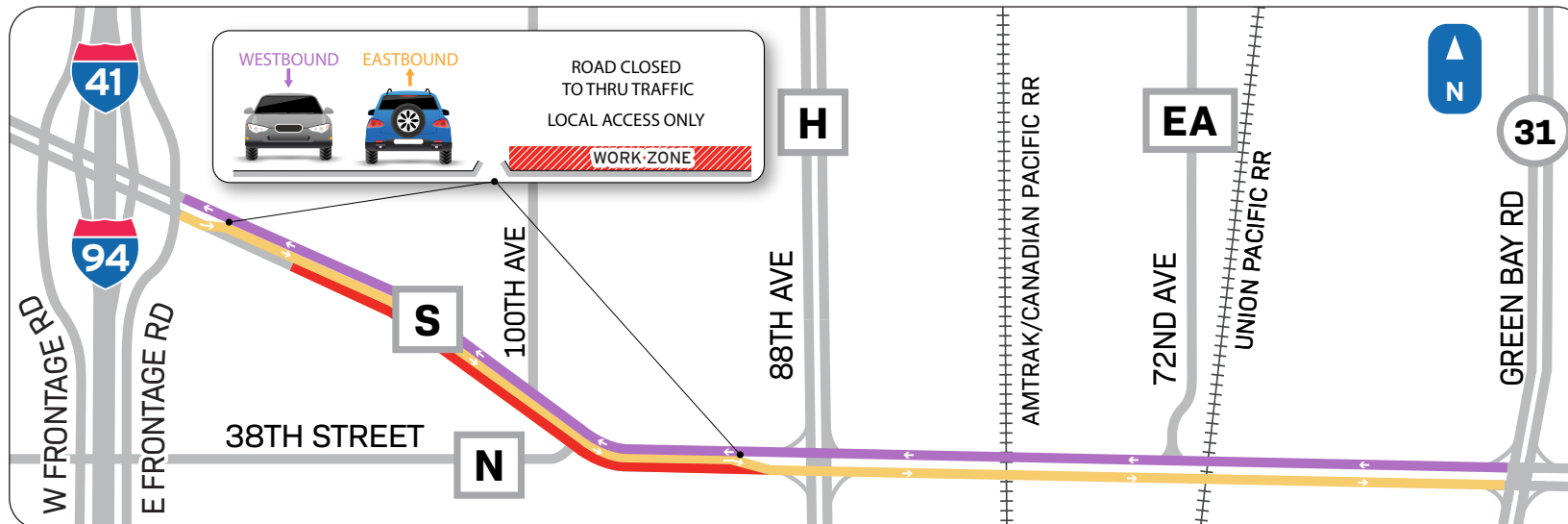
Kenosha County is currently underway with reconstructing County Highway S from the Interstate 94 East Frontage Road to WIS 31, with scheduled completion in 2021.

Winter shutdown is scheduled for mid-December with crews to resume work in spring of 2021. The winter traffic configuration will be as follows:

Tuesday, December 8:

- County Highway S from Interstate 94 East Frontage Road to 38th Street (County Highway N) is scheduled to reopen to traffic by the end of the day.
- Westbound traffic is scheduled to be shifted to the newly constructed lanes of County Highway S from the Interstate 94 East Frontage Road to WIS 31 by the end of the day.
- Eastbound traffic is scheduled to be shifted to the north, from just east of the Interstate 94 East Frontage Road to just west of County Highway H, to the newly constructed westbound lanes of County Highway S by the end of the day.
- County Highway H is scheduled to be open to one lane in each direction, with dedicated turn lanes by the end of the day.

*** Travelers should be aware of the new traffic pattern, obey traffic control signs and pavement markings, and drive safely throughout the work zone. The project team thanks you for your patience and cooperation throughout this project!**



Please note that all work is weather dependent and date subject to change

LEGEND

- WESTBOUND
- EASTBOUND
- CLOSED, ACCESS FOR LOCAL TRAFFIC ONLY

map not to scale



Find us on Facebook at:
Kenosha County Government



Find us online at:
Kenosha County Highways

Project Contact: Rachel Andreoli
Public Involvement Lead
Cell: (262) 977-0234
Email: Rachel@devopr.com

